

EXHIBIT 14

PREMIER
WORLD DISCOVERY



Premier World Discovery invites
The Osher Institute of the University of Richmond
Cape Cod & the Islands

October 3, 2026

7 DAYS

**BOOKING
DISCOUNT!**

Save \$100 Per Person
\$200 Per Couple*

**NO RISK DEPOSIT
NO CHANGE FEES**

*Book Now and your Deposit is Risk Free with
No Change Fees until Final Payment Due Date!*

*See back for details***



TOUR RATES:

Booking Discount*: **\$3575** pp double

Regular Rate: **\$3675** pp double

Single Supplement: +\$850

*See Reservation Info for Booking Discount details



Cape Cod & the Islands

DAY 1: FLIGHT TO BOSTON

Today fly to the historic city of Boston. Upon arrival meet your Tour Director and transfer to your Boston area hotel for a one night stay.

Overnight: **Boston area, MA**

DAY 2: BOSTON CITY TOUR - PLYMOUTH - CAPE COD

This morning enjoy a **Boston City Tour** featuring Boston Commons, the Old State House, the Old North Church from where Paul Revere got the signal to start his famous ride, the Old South Meeting House, Beacon Hill and Old Ironsides. Visit the **Faneuil Hall Marketplace**, located in downtown Boston near the waterfront and originally gifted to the city in 1742. Later depart Boston and travel to Plymouth.

Visit **Plimoth Plantation**, an accurate re-creation of the Pilgrim's 1627 village where costumed interpreters portray colony residents in this living history museum. Then celebrate the journey that brought the pilgrims to the New World as you visit the **Mayflower II**, the 1620 ship reproduction was recently renovated for the 400th Anniversary of the voyage. Also see famous **Plymouth Rock**, the place where the Pilgrims first stepped ashore after a 66 day

trans-Atlantic voyage. Later arrive at your hotel on Cape Cod for a 5-night stay. Enjoy a **Welcome Dinner** this evening with your fellow travelers.

✕ (B,D) Overnight: **Hyannis/Yarmouth, MA**

DAY 3: MARTHA'S VINEYARD

This morning enjoy a scenic ferry ride to famous **Martha's Vineyard** where little has changed since European settlers arrived early in the 17th century. The island's resident population includes writers, artists, entertainers and fishermen. Your **Martha's Vineyard Tour** includes the colorful Victorian cottages of Oak Bluffs, Edgartown with its stately houses built by whaling captains, pristine beaches and colorful yacht harbors. Later return via ferry and back to your hotel.

✕ (B) Overnight: **Hyannis/Yarmouth, MA**

DAY 4: CAPE COD NAT'L SEASHORE - CRANBERRIES - P'TOWN

This morning travel along the **Cape Cod National Seashore**, dedicated in 1961 by President JFK, which features forty miles of pristine sandy beaches, marshes, ponds, and uplands supporting diverse species of wildlife dotted with lighthouses, cultural landscapes and wild cranberry

bogs. Visit a traditional **Cranberry Bog** and learn about the harvesting of Cape Cod's famous fruit. Later arrive in **Provincetown**, located on the tip of Cape Cod which boasts a lively artist community, beautiful beaches, great restaurants and charming shops. Enjoy some leisure time to relax, eat and shop. Late afternoon return to your Cape Cod hotel. Dinner is included this evening at a popular local restaurant.

✕ (B,D) Overnight: **Hyannis/Yarmouth, MA**

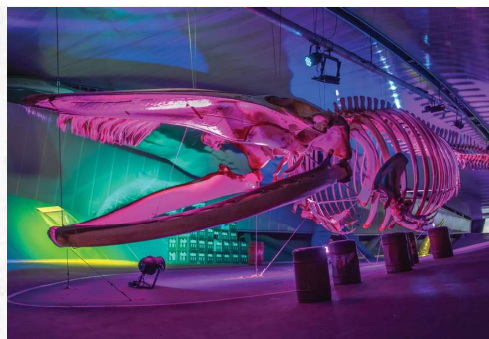
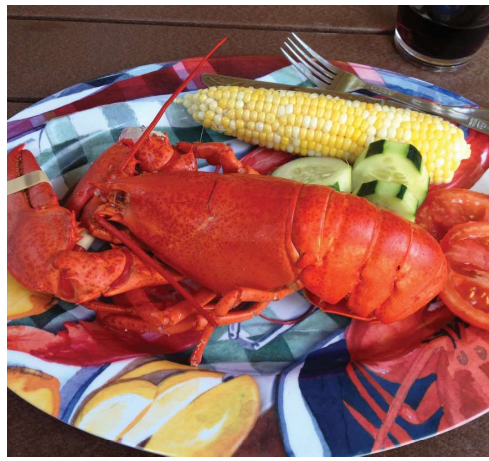
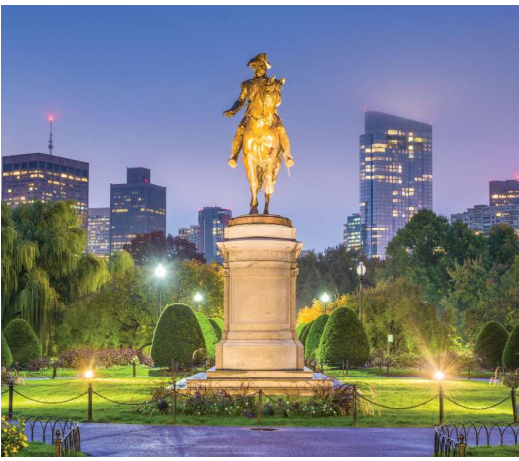
DAY 5: NEWPORT, RHODE ISLAND

Today visit **Newport, Rhode Island**, one of New England's most delightful coastal cities and a long time favorite vacation site of affluent socialites and yachting enthusiasts. Enjoy a **Newport City Tour** and drive by the **Touro Synagogue**, the oldest synagogue in America, the **International Tennis Hall of Fame** and the splendid estates along **Bellevue Avenue**. Marvel at the extravagant life-style of a bygone era with a guided tour of **The Breakers Mansion**, the Vanderbilt's lavishly decorated turn of the century mansion. Then follow "Ten-Mile-Drive" along the magnificent rocky coast which boasts exquisite estates from the early 1900's.

✕ (B) Overnight: **Hyannis/Yarmouth, MA**

DAY 6: NANTUCKET ISLAND

This morning board a ferry and cruise to scenic and historic **Nantucket Island** featuring a cobblestoned **Main Street**, unspoiled beaches, sea Captains' houses and art galleries. Enjoy



a visit to the Nantucket Whaling Museum including its rooftop observation deck overlooking the harbor and other whaling exhibits all reflections of an island that some 300 years ago was the whaling capital of the world. Enjoy some time at your own pace to shop or explore the yacht filled harbor and waterfront. This afternoon board a ferry and return to your Cape Cod hotel. Tonight's Farewell Dinner is a traditional New England Lobster Dinner.

(B,D) Overnight: Hyannis/Yarmouth, MA

DAY 7: CAPE COD - BOSTON FLIGHT HOME

Today transfer to the Boston airport filled with wonderful memories of your Cape Cod & the Islands Tour.

(B)

TOUR ACTIVITY LEVEL
Easy **1 2 3 4** Active



TRAVEL AND SAVE!

The Premier Compass Club rewards our valued guests with special recognition and a Compass Club Loyalty Credit on future tours and cruises.

Guests that have completed a trip will automatically be enrolled and will receive an additional \$100 per person or \$200 per couple Compass Club Loyalty Credit applied to their next Premier World Discovery tour or River Cruise. Loyalty Credit is valid for 24 months from your last tour.

For more details and information visit:
premierworlddiscovery.com

HIGHLIGHTS

- ▶ 5 Nights - Cape Cod
- ▶ 1 Night - Boston
- ▶ Boston City Tour
- ▶ Faneuil Hall Marketplace
- ▶ Martha's Vineyard Tour
- ▶ Nantucket Island Visit
- ▶ Nantucket Whaling Museum
- ▶ Plimoth Plantation
- ▶ Mayflower II
- ▶ Plymouth Rock
- ▶ Provincetown
- ▶ Cranberry Bog
- ▶ Cape Cod Nat'l Seashore
- ▶ Newport, RI
- ▶ Breakers Mansion
- ▶ New England Lobster Dinner

INCLUSIONS

- ▶ Roundtrip Airfare - RIC
- ▶ 9 Meals: 6- Breakfasts & 3- Dinners
- ▶ Professional Tour Director
- ▶ Motorcoach Transportation
- ▶ Admissions per Itinerary
- ▶ Sightseeing per Itinerary
- ▶ Baggage Handling at Hotels
- ▶ Hotel Transfers

ACCOMMODATIONS

- ▶ 6 Nights First Class Hotel
- ▶ 1 Night - Hyatt Place Boston/Braintree or Le Meridien Boston/Cambridge
- ▶ 5 Nights - Doubletree Cape Cod, Holiday Inn Cape Cod or Courtyard by Marriott Cape Cod, Hyannis

On some dates alternate hotels may be used



TOUR RATES:

Booking Discount*: **\$3575** pp double

Regular Rate: **\$3675** pp double

Single Supplement: +\$850

*See Reservation Info for Booking Discount details

RESERVATION FORM (USA)
CAPE COD & THE ISLANDS

October 3, 2026

Booking #218171 (Web Code)

Contact Information/Mail Reservation Form to:
Premier World Discovery • Attn: OLLI at Richmond
1650 So Pacific Coast Hwy, Suite 202
Redondo Beach, CA 90277
877.953.8687 • bookings@pwd.travel
aspeer@premierworlddiscovery.com

Make checks payable to: **PREMIER WORLD DISCOVERY**

Enclosed please find a deposit in the amount of \$ _____ (\$400 per person)
to secure reservations for _____ # of people.

Premier's Travel Protection Plan (TPP): Yes, I (we) wish to purchase travel protection (TPP)
(TPP must be purchased with initial deposit) No, I (we) decline travel protection (TPP)

Enclosed please find payment in the amount of \$ _____ (\$399 per person)
to secure the Premier's Travel Protection Plan (TPP).

TOTAL PAYMENT \$ _____

GATEWAY AIRPORT _____ **ROOMMATE'S GATEWAY AIRPORT** _____
see flyer for included group gateway airport/departure city, additional charges apply for other airport packages

To avoid change fees, submit full legal names (first/mid/last) **exactly as they appear on the government issued ID** used for travel (REAL ID/Passport)

Legal Name: _____

DOB (MM/DD/YY) _____ Gender M F

Street Address _____ Check if Roommate's address is the same

City _____ State _____ ZIP _____

Email address _____

Mobile Phone# _____

Emergency Contact/Tel# _____

Notes or TSA/KTN #: _____

Roommate's Legal Name: _____

DOB (MM/DD/YY) _____ Gender M F



Cardholder Name (if paying by credit card) _____

Credit Card # _____ Exp Date: _____

CVV# _____ Amount to be charged \$ _____

Credit Card Billing Address: Check if address is the same as above

Address _____ City _____

State _____ ZIP _____ Tel# _____

Sign _____ Date _____

SIGNATURE REQUIRED (for credit card use & acceptance of terms*)

**I (We) agree to pay according to the credit card issuer agreement. I understand and accept the cancellation fees/policy and other terms.*

DEPOSIT & FINAL PAYMENT

Deposit of \$400 per person is due with Reservation Form to secure reservations. **Reservations are taken on a first come, first served basis.** Final Payment Due Date is 90 days prior to departure.

***BOOKING DISCOUNT**

Make your Final Payment by check prior to the Final Payment Due Date & receive **\$200 per couple/\$100 per person Booking Discount!** **Land Only Packages receive \$100 per couple/\$50pp BD.**

- Initial Deposit can be made by check or credit card to be eligible.
- Payments after Initial Deposit are considered part of Final Payment & must be made by check.

ONLINE BOOKING OPTION

Save time, postage & secure your seat for this group departure. Simply type <https://res.premierworlddiscovery.com> into your web browser & use the Booking Number (Web Code) from this flyer to make your Deposit online in just a few minutes. No need to submit a Reservation Form if booking online.

PREMIER'S TRAVEL PROTECTION PLAN (TPP) \$399 per person

(must purchase with Initial Deposit)

Part A - Cancellation Waiver provided by PWD

I. Trip Cancellation Waiver (TCV) - Guarantees full refund on all payments, except the Trip Cancellation Waiver Fee itself in case of cancellation up to the time and date of departure due to the passenger's personal illness or death of an immediate family member. Medical/official documentation required.

II. Premier "Any Reason" Cancellation Waiver (ARCW) - Reimburses 75% of the cancellation fees in the form of a future travel credit certificate (FTCC) valid for 1 year, if you cancel more than 48 hours prior to scheduled departure for any reason not eligible for cash refund under the TCV (Part A - I). FTCC is non-transferable, may not be redeemed for cash and does not include any credit for the Trip Cancellation Waiver Fee. **The Trip Cancellation Waiver Fee must be paid for with Initial Deposit and is refundable until 180 days prior to departure.** The Trip Cancellation Waiver does not cover any single supplement charges due to an individual's traveling companion cancelling prior to departure. The Trip Cancellation Waiver is non-transferable and valid for each applicant only. The Trip Cancellation Waiver does not cover any services such as airline tickets not purchased through PWD. Cancellations, Refunds & Inquiries under Part A will be handled by PWD. Certain Exclusions and Restrictions apply.

Part B - Post Departure Travel Protection Plan* provided by USI

Includes coverage for: Trip Interruption (\$1,000); Trip Delay (\$100/Day-Max \$500); Baggage & Personal Effects (\$2,000); Baggage Delay (\$500); Emergency Accident/Sickness Medical Expense - excess coverage (\$30,000); Emergency Evacuation/Repatriation (\$150,000); Accidental Death & Dismemberment (\$25,000); Non-Insurance and Emergency Travel Assistance Services** (24/7). Claims & Inquiries under Part B will be administered by USI.

For full Part A and Part B plan details visit: premierworlddiscovery.com/TPP
All Benefits described on this page are for general information basis only. There are certain restrictions, exclusions and limitation that apply to all insurance coverages. Plan benefits, limits and provisions may vary by state jurisdiction.

****NO RISK DEPOSIT - NO CHANGE FEES**

Deposits & TPP payments for any Bookings made for this tour are fully refundable until 180 days prior to departure. Should your plans change inside of 180 days you can use the full value (Future Travel Credit**) of your Deposit or TPP on a different program as long as you change plans or let us know prior to the Final Payment Due Date.
**FTC's are valid for 12 mos from dep date & non-transferable.

CANCELLATION FEES**

Cancellations not covered by the Travel Protection Plan (TPP) or if the TPP is not purchased, are subject to the following per person fees:
- Cancel more than 180 days prior to departure: Full Refund
- Cancel 179-90 days prior to departure: Deposit or TPP* is Retained**
- Cancel 89-60 days prior to departure: 25% of total price
- Cancel 59-30 days prior to departure: 50% of total price
- Cancel 29-15 days prior to departure: 75% of total price
- Cancel 14 days or less prior to departure/no shows: No refunds
*If purchased **Future Travel Credit issued for Deposit or TPP* value

RESPONSIBILITY

World Tours LLC dba Premier World Discovery (hereafter PWD), whose vouchers are used by respective agents for the passenger in all matters pertaining to hotel accommodations, sightseeing tours and transportation, hold themselves free of responsibility for any damages occasioned from any cause whatsoever. PWD will not be responsible for any damages or inconvenience caused by late arrivals, departures and change of schedule or other conditions nor will they be responsible for any act, omission, or event during the time the passenger is not on board their conveyance. The passage contract in use by the airline concerned, when issued, shall constitute the sole contract between the airline and the purchaser of this tour/cruise, and/or passenger. PWD does not hold any responsibility for the conduct of any of its members, hotel, motorcoach, cruise/line, train, airline or other personnel. PWD reserves the right to decline to accept or retain any person as a member of a tour/cruise at its discretion. PWD &/or its Tour Director retain the right to require any participant to withdraw from a tour/cruise at any time, if determined to be in the best interests of health, safety & general welfare of the tour/cruise group or of the individual participant. Arbitration - I/We agree, any and all disputes concerning this contract or any other material concerning the trip, or the trip itself must be resolved exclusively pursuant to binding arbitration in the state of California, pursuant to the then current rules of the American Arbitration Association. Payment of the deposit for this tour/cruise constitutes acceptance of these terms and conditions. CST #2048841-40

IMPORTANT CONDITIONS/NOTES

Itinerary and hotels are subject to change.

AIR NOTE/SEAT REQUESTS/AIRLINE BAG FEES:

Air Schedules may not be available until Final Trip Documentation is received. Airline baggage fees & seat assignment fees are not included in tour rates. Many airlines do not provide advance seat assignments until check-in at the airport. If specific seat requests or airline choice is extremely important to your reservation, we recommend you book land only and make your own air reservations. Please make this adjustment to land only/own air at time of tour reservation.

