

Now offering Annual Memberships as low as \$50!

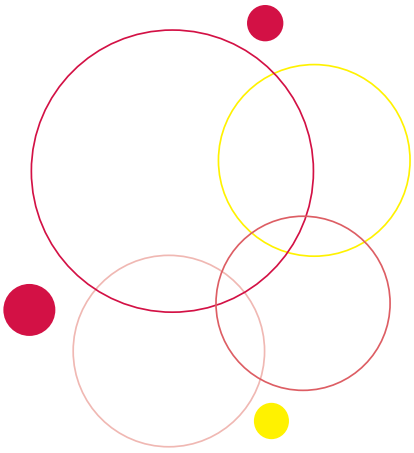


Summer 2005  
Schedule of Classes

think  
**summer**



**RICHMOND**  
School of Continuing Studies



A lifelong learning program  
for people over 50.





# 4

## Join Osher for as little as \$50 per year.

Our membership levels give individuals more flexibility in participating and a great option to “get acquainted” with the Osher Institute.



# 6

## Exercise your mind and your body.

In addition to thought-provoking and engaging courses, Osher members also have access to the University of Richmond Wellness Center. It’s one of many University benefits that Osher members receive.



# 8

## Explore the Constitution over breakfast.

Join Rodney Smolla, Dean, T. C. Williams School of Law at the University of Richmond for *Breakfast with the Constitution*, a popular course covering current constitutional issues.



# 12

## Lunch and a Lecture.

Come take part in this series of talks, on a variety of timely topics. Bring your brown bag lunch and enjoy the provided cookies and soft drinks. All Brown Bag Lectures are free and open to the public, so bring a friend.

### WHAT'S INSIDE

4 Membership Levels

5 Membership Benefits

7 Osher Mini Courses

10 Credit Courses for Audit

12 Brown Bag Lectures

15 Membership Application

17 Course Registration Form

20 Campus Map



Transforming lives through lifelong learning.  
[www.richmond.edu/scs](http://www.richmond.edu/scs) 804.289.8133

This schedule is a publication of the University of Richmond School of Continuing Studies. The contents represent the most current information available at the time of publication. However, due to the period of time covered by this catalog, it is reasonable to expect changes to be made without prior notice. Comments and course suggestions are welcome. Please call (804) 287-6344 or e-mail [jdowrick@richmond.edu](mailto:jdowrick@richmond.edu).

## There's a new senior class at the University of Richmond.



There are three Osher membership levels from which to choose, depending on your level of interest.

See page 15 for your Membership Application.

You can become an Osher member for as little as \$50 per year.

And, if you're 50 or older with a curious mind and a keen interest in learning, we'd love for you to be a part of it.

The Osher Lifelong Learning Institute has been established at the University of Richmond School of Continuing Studies through a grant from the Bernard Osher Foundation of San Francisco. We are a membership organization that serves adults 50 and above who are seeking opportunities for intellectual stimulation in a community of lifelong learners.

We offer an extensive array of courses in the liberal arts in the fall, spring and summer semesters. The offerings are a combination of undergraduate credit courses for audit, special interest mini-courses, community service projects, performing arts events and more. There are no entrance requirements, no tests and no grades. In fact, no college background is needed at all—it's your love of learning that counts.

You can become an Osher member for as little as \$50 per year. A summary of membership levels and benefits begins below. To become a member, see page 15 for a Membership Application or visit us online at [www.richmond.edu/scs/osher](http://www.richmond.edu/scs/osher) and click on *Become a Member*.

### Membership Levels

#### GOLD

**\$400/year**

Our **Gold** membership is perfect for individuals who want to take advantage of the entire Osher Lifelong Learning Institute experience. This individual membership includes a University of Richmond One Card and e-mail address, parking pass, six complimentary tickets to the Modlin Center (two additional free tickets for UR alumni), full use of the library including access to online data bases, membership in "Friends of the Boatwright" and full use of the University of Richmond Wellness Center. In addition, **Gold** members have unlimited access to all Osher courses included in this Schedule of Classes free of charge.

#### GOLD PLUS ONE

**\$600/year**

**Gold Plus One** is the perfect membership for couples or friends who are interested in joining Osher together. When you join with another person as a **Gold Plus One** member, each person saves \$100. This level includes the same benefits as our **Gold** membership but covers two people joining together.

#### SILVER

**\$50/year**

Our **Silver** membership is the perfect "get acquainted" level for individuals who are interested in seeing what Osher has to offer. For a small annual fee, an individual receives a University of Richmond One Card and e-mail address, parking pass, full student-status use of the library including access to online data bases, full use of the University of Richmond Wellness Center and access to register for Osher courses. However, **Silver** members pay for each course in which they enroll.

**Silver** members pay \$100 to audit available semester-long credit courses. Silver members are limited to one audit course per semester.

**Silver** members pay for each Osher course in which they enroll. Course fees are listed in this Schedule of Classes.

### The Value of an Osher Membership

Osher Benefit	Value	Osher Benefit	Value
Osher Short Courses	\$40 and up	Online Data Base Subscription	\$35 and up <sup>3</sup>
UR Undergraduate Course	\$849–\$3,500 <sup>1</sup>	Modlin Center Ticket	\$12 and up
Wellness Center	\$500 and up <sup>2</sup>	<b>Total Value: \$1,387 and up</b>	

1. Costs vary depending on the school in which the course is offered. We've used a School of Continuing Studies 3 credit hour course (\$849) to illustrate the total value. 2. An average cost for an annual senior fitness membership in Richmond area. 3. An average cost for an individual subscription.

## A University Setting Provides Numerous Membership Benefits

### University of Richmond E-mail Address

All Osher Institute members are eligible for a University email address. Advantages to this include the ability to access Boatwright Library online databases from home or from the Boatwright Library and receiving University notices that are sent to all students, such as "Spiderbytes" of upcoming events. You will still need to maintain an internet connection at your home, in order to access your UofR email address.

### Speech Center

If you are considering a speaking assignment, the University Speech Center would like to offer support. Individuals may schedule practice time on a wide variety of visual aids, including Power Point, overhead transparencies, and audio support. Peer tutoring sessions are available with any of the student speech consultants at times designed to suit clients' schedules. There is no charge and reservations are required. To make a reservation or for more information on the Speech Center, go to <http://speech.richmond.edu>

### International Film Series

Come and enjoy the University of Richmond International Film Series. These films, which are free and open to the public, are shown in the original language with English subtitles. For more details, look on the International Film Series website: <http://oncampus.richmond.edu/~mrc/ifilm.html>.

### One Card: University of Richmond ID Card

Osher Lifelong Learning Institute members are eligible for the University of Richmond "One Card" which will be used to:

- Obtain complementary tickets for Modlin Center performances (see Modlin Center information in this catalog)
- Check books out at the Boatwright Library
- Receive discounts at the faculty/staff rate for University events
- Use the One Card as a debit "Spidercard" after the member deposits funds by calling 804-289-8769 or online at: <https://spidercard.richmond.edu>

The Osher Institute office staff will contact newly enrolled Osher Institute members when their enrollment forms and fees have been processed for One Card eligibility. To receive your One Card (this includes having your picture taken), stop by the One-Card Services office, open between 8:30 a.m. and 4:30 p.m. Monday through Friday, located in room 330 of the Tyler Haynes Commons Building.

### Boatwright Memorial Library

All Osher Institute members enjoy full student privileges at the Boatwright Library, which include:

- Borrowing books, audiobooks and music recordings
- Use of more than 120 online library databases that can be accessed from a home computer with activation of a University email address

An orientation to the Boatwright Library will be held for Osher Institute members on Tuesday, June 21, from 2-4 p.m. at the Boatwright Library.

**Interested in enrolling in a class or two? Or three? Or more? Osher Gold and Gold Plus One members may register for as many of the courses listed in this schedule as they'd like as space is available for no charge.**

See page 14 for more information on becoming a member.

**Osher Institute Gold and Gold Plus One members may elect to be enrolled in the "Friends of the Boatwright Memorial Library." Boatwright Library Friends are invited to special events throughout the year.**





Osher Institute members are eligible to use University Wellness Center facilities at no cost during scheduled hours.



## Osher Members Receive Benefits All Over Campus

### Modlin Center

Osher **Gold** and **Gold Plus One** members are eligible for one complimentary ticket to each of six Modlin Center performances. When calling to reserve a seat for a Modlin Center event, please have your UR One Card ID number ready. All Osher Institute members with a valid One Card will receive the faculty/staff rate for tickets to all Modlin Center performances.

UR Alumni who are **Gold** or **Gold Plus One** members are eligible for two extra complimentary Modlin Center tickets.

### University Wellness Center

The University of Richmond informal recreational facilities are scheduled and designed to provide optimal recreational opportunities for students, faculty, and staff of the University. With a valid picture University ID card, Osher Institute members are eligible to use the facilities at no cost during scheduled hours. Facilities include exercise equipment and group exercise sessions. Current weekly schedules can be found online at [www.richmond.edu](http://www.richmond.edu) by selecting "Recreation and Wellness" in the Campus Directory or by calling 289-8361.

### Technology Learning Center (TLC)

The TLC is available for use by Osher Institute members with a valid One Card and an activated UofR email account. TLC resources include a Macintosh and PC production lab and training materials available for checkout. Help is available from student lab assistants. Priority for use of equipment and lab assistance is given to undergraduates working on academic projects. The TLC is located on the 3rd floor of the Boatwright Library. More information is available online at [www.richmond.edu](http://www.richmond.edu) by selecting "Technology Learning Center" in the Campus Directory or by calling 289-8772.

### Jepson Forum

Osher Lifelong Learning Institute members will not want to miss the exciting Jepson Forum offerings for 2005. Tickets are free and may be reserved three weeks before the event by calling (804) 289-8980. For group tickets or other questions, contact Sue Robinson in the Community Programs Office, (804) 287-6627, [jepson@richmond.edu](mailto:jepson@richmond.edu). Forum evenings often include a book signing, giving patrons an opportunity to speak briefly to the speakers. The University Bookstore staffs a book sale table in the lobby before and after the lecture and accepts credit cards and checks.

### University of Richmond Center for Civic Engagement

At the Center for Civic Engagement, Osher members may join undergraduate students, faculty, staff, and community members to address civic and social issues through action, reflection, and research.

The center will be sponsoring weekly brown bag lunch discussions. Osher Lifelong Learning Institute members are welcome to attend these discussions. The location and weekly topics will be shown on the Center for Civic Engagement website: [www.richmond.edu/engage](http://www.richmond.edu/engage).

## Osher Lifelong Learning Institute Mini Courses

### ACADEMIC RESEARCH

#### The Bounty of the Boatwright: An Orientation to the Boatwright Library

Access to the vast resources of the Boatwright Memorial Library is one of your Osher member benefits. You will learn how to use the library from your home computer (including over 120 online databases) and tour the library building. (Osher members will need to activate their network ID prior to this class.)

**Fee:** Tuesday, June 21

**Time:** 2-4 p.m.

**Fee:** This class is free to Osher Silver and Gold members.

**Faculty:** Lucretia McCully, Head of Outreach and Instruction Services, Boatwright Library; B.A. in history from Salem College and an MSLS from the University of Tennessee. Ms. McCully has written articles on such topics as enhancing women's studies, action research projects through technology, customer service in libraries, developing library services for the country's first leadership school, and women's studies on the Internet.

#### What's In the Box—How Does It Work: A Basic Computer Class

This is a "hands on" class where you will learn about the various parts of your computer and what they do - in everyday terms. We will cover everyday "computerese" terminology you can use to talk with that computer techie person if you should have to. You will find out what Windows is all about. We will help you solve the mystery of creating and organizing files, and help you find that "lost" file. You will take a quick tour of Microsoft Word and create a document. And, we will explore the Internet and practice surfing the Web. (Osher members will need to activate their network ID prior to this class.)

Mini courses are unique courses design for Osher members. These courses cover a variety if topics and some are even taught by Osher members.

**Dates:** Thursday, Monday and Wednesday; June 2, 6 and 8 **Time:** 2-4 p.m.

**Fee:** \$60 for Silver Members; no fee for Gold or Gold Plus One Members

**Faculty:** Tim Williams, B.S., Secondary Ed., Indiana University of Pennsylvania, M.S., Education, University of Southern California; retired US Army officer and retired Dominion Virginia Power Training Specialist, over twenty years of computing experience including network administration, with the past ten years instructing computer basics for Dominion Virginia Power employees.

Bill Morling, B.S., Iowa State University; M.B.A., University of Chicago; more than 35 years of computing experience, much of it in higher education, including managing the Computer Center at Randolph-Macon College; instructor for adult computer courses in Hanover and Henrico counties.

Fees for Osher Mini Courses vary by course and membership level. See each course description for fees. There is never a fee to enroll in Mini Courses for Gold and Gold Plus One members.

#### Where in the World Wide Web is Waldo—and Other Ancestors

The Internet is a vast resource that can hold many clues and details about your ancestors—if you just know where to look. This is an introductory course in how to use the Web to find information about your ancestors and develop your personal family history. To benefit from this class, participants need to have some experience using the Internet. (Osher members will need to activate their network ID prior to this class.)

**Dates:** Tuesday through Thursday, July 26, 27 and 28 **Time:** 2-4 pm.

**Fee:** \$60 for Silver Members; no fee for Gold or Gold Plus One Members

**Faculty:** Donna M. Shumate, Adjunct Assistant Professor, B.A., M.Ed., Virginia Commonwealth University, Human Resources Manager, Virginia Retirement System

OSHER LIFELONG LEARNING INSTITUTE ■ SUMMER 2005 SCHEDULE OF CLASSES ■ MEMBER BENEFITS & MINI COURSES



Interested in joining Osher? See page 14 for details on becoming an Osher member.

Join Rodney Smolla, Dean of T.C. Williams School of Law at the University of Richmond for this engaging event. Breakfast begins at 7:30 a.m.

## ART

### A Len's Eye-View of Richmond's 20th Century

Dementi Studio has been photographing Richmond and Richmonders for most of the 20th Century. From their family archive of over two million negatives, four collections have been selected as the subjects for this class:

- *Celebrate Richmond*, a broad view of life and business in Richmond in the 20th Century, based on the book of the same title
- *Celebrate Richmond Theater*, a view of Richmond's rich theater history, from vaudeville through the picture palace era to today's multiplex cinemas, based on the book of the same title
- *Then & Now, Dementi Studio Photographs of the University of Richmond*, an exhibition created to assist in the celebration of the University's 175th Anniversary.
- *Celebrate Richmond Businesses*, a photo exhibition featuring the evolution and growth of eleven recognized businesses in Richmond, including A.H. Robins, Ukrops's and Reynolds.

**Dates:** Tuesdays, June 7, 14, 21 and 28

**Time:** 10 to 11:30 a.m.

**Fee:** \$60 for Silver Members; no fee for Gold or Gold Plus One Members

**Faculty:** Wayne Dementi, Dementi Studio

## LAW

### Breakfast with the Constitution: The President and The Supreme Court: The Delicate Balance of Power

The President of the United States is arguably the single most powerful leader of any democratic society in the world. The Supreme Court of the United States is arguably the single most influential "constitutional court" in any democratic society in the world. What is the relationship between the executive and judicial branches of government in our system, and most importantly, how do the powers of the President intersect with the powers of the Supreme Court? To what extent does the President act as a "check and balance" on the Court, and to what extent does the Court act as a "check and balance on the President?" This interactive session will examine the constitutional text, history, and actions of the President and the Supreme Court in an exploration of the critical elements of the "delicate balance" that is vital to our constitutional system.

**Date:** Tuesday, June 14

**Time:** 7:30-9:30 a.m.

**Fee:** \$50 for Silver Members; no fee for Gold or Gold Plus One Members

**Special Notes:** This course is pending approval by the Virginia Mandatory Continuing Legal Education Board. Includes a breakfast buffet which begins at 7:30 a.m.

## LITERATURE

### Edith Wharton: Manners, Morals, and the Aristocracy

Introduction to the writings of Edith Wharton, first woman to win the Pulitzer Prize (for *The Age of Innocence*, 1921). Readings will include short fiction set in America and France and her travel essays, and will be supplemented by slides and photographs of her American and French homes.

**Dates:** Tuesday through Thursday, July 19, 20 and 21

**Time:** 2-4 p.m.

**Fee:** \$60 for Silver Members; no fee for Gold or Gold Plus One Members

**Faculty:** Sarah Bird Wright, Adjunct Associate Professor, A.G., Bryn Mawr College; M.A., Duke University; Ph.D., The College of William and Mary; Freelance writer and editor.







## Cool Flick on Warm Summer Nights

Many excellent films have been inspired by great works of literature. We will watch and discuss three of them:

### *The Man Who Would Be King*

"Based on a famous short story by Rudyard Kipling, this tall tale is a prime example of charismatic casting. Daniel Dravot (Sean Connery) and Peachy Carnahan (Michael Caine) are a couple of bored British soldiers stationed in India when they hear of a kingdom filled with riches just ripe for the picking, high in the mountains of Kafiristan. They soon embark on the adventure of a lifetime." (from netflix.com)

### *Death of a Salesman*

"Alex Segal directed this 1966 production of Arthur Miller's classic American play, *Death of a Salesman*. Lee J. Cobb stars as Willy Loman, the everyman who is suddenly faced with the glaring reality that he is past his prime and has begun living in a self-created fantasy world in which he is not obsolete. The performance also features James Farentino as Happy Loman, George Segal as Biff Loman, and a young, pre-fame Gene Wilder as Bernard." (from barnesandnoble.com)

### *To Kill a Mockingbird*

"Southern comforts abound in this zesty adaptation of Harper Lee's Pulitzer Prize-winning novel. Gregory Peck won an Oscar for his role as Atticus Finch, a widowed lawyer who takes on the task of defending an innocent black man (Brock Peters) against rape charges, only to wind up in a maelstrom of hate and prejudice that threatens to invade the lives of his children." (from netflix.com)

**Dates:** Wednesdays, June 29, July 13 and 27

**Time:** 6-9 p.m.

**Fee:** This class is free to Osher Silver and Gold members and their guests. Facilitator: Jane Dowrick, Program Coordinator, Osher Lifelong Learning Institute, M.Ed., Virginia Commonwealth University

## MUSIC

### Jazz Notes, Served up with Wine and Cheese

This special lecture, which will highlight the history and art of Jazz, takes place before the Modlin Summer Nights Jazz concert. Wine and cheese will be served.

**Date:** Wednesday, June 1

**Time:** 4:30-6:15 p.m.

**Fee:** There is no charge to Silver, Gold or Gold Plus One members for the lecture. Tickets for the 6:30 p.m. concert may be purchased through the Modlin Box Office, 289-8980. Note that Osher Gold and Gold Plus One members are eligible for a complimentary Modlin ticket to each of six performances per year.

**Faculty:** Michael A. Davison, Professor of Music, UR Department of Music and Director for the UR Jazz Ensemble, 1986 B.M.E., Eastman School of Music; M.S.T., University of Wisconsin at Whitewater; D.M.A., University of Wisconsin at Madison

## RELIGION

### Comparative Religions: Brothers or Enemies?

This class will explore the commonalities and differences between the three Abrahamic religions: Judaism, Christianity and Islam.

**Dates:** Tuesday, Wednesday and Thursday, July 12, 13 and 14

**Time:** 2-4 p.m.

**Fee:** \$60 for Silver Members; no fee for Gold or Gold Plus One Members

**Faculty:** Muhammad S. Sahli, Ph.D., Acting Director, A More Perfect Union, UR Chaplaincy Office; past president of The Islamic Center of Virginia, and scholar of Islam, Islamic Civilization and the West; B.Sc, American University of Beirut; Ph.D., University of South Carolina.



This is no charge to Silver, Gold or Gold Plus One members for this special lecture.

All credit courses for audit are on a space available basis. Silver Osher Members are limited to one audit course per semester for a fee of \$100. There is no fee to audit courses for Gold and Gold Plus One Osher Members. Gold and Gold Plus One Osher Members may audit unlimited courses as space is available.



## University of Richmond Credit Courses Open for Audit

### ART

#### Foundation Drawing

Explores issues of form and visual composition, traditional and contemporary concepts in drawing, and problems of observational drawing.

**Dates:** MTWRF, June 13-July 8

**Time:** 10:15 a.m.-12:15 p.m.

**Faculty:** George Whitman, M.F.A., Adjunct Instructor, University of Richmond

### BIOLOGY

#### Environmental Ethics

Examination of complexities of environmental relationships and issues including scientific knowledge, economic, political, social, and moral values within the U.S. and between countries of the world. Will explore alternative solutions to environmental problems from multiple perspectives through various value/moral systems.

**Dates:** MTR, July 11-August 5

**Time:** 6:15p.m.-9:35 p.m.

**Faculty:** J. Dewey Brown, M.S.; Adjunct Assistant Professor, University of Richmond, School of Continuing Studies; Instructor, The Steward School

### FILM AND MEDIA

#### American Film Comedy

An investigation into the art of comedy through the viewing of American films from Chaplin to Carrey, along with several theories of comedy from Greek to Freud to Bergson.

**Dates:** MTWR, June 13-July 8

**Time:** 6:15 p.m.-9:35 p.m.

**Faculty:** Irby Brown, Ph.D., Professor of English, Emeritus, University of Richmond and Paul Porterfield, M.S.L.S., EdS., Director, Media Resource Center, University of Richmond

#### Hollywood Comes to Richmond

Learn techniques of storytelling for the screen, using methods used in Hollywood movies. Whether for your own home videos or work that you hope to reach a wider audience, learn methods for developing ideas, writing, shooting and marketing your story ideas. Valuable information for not only your own home productions, but for movies made for wider audiences as well.

**Dates:** TWR, June 14-July 8

**Time:** 6:15 p.m.-9:35 p.m.

**Faculty:** Andrew Lane, B.A., Directing Artist in Residence, North Carolina School of the Arts

### INFORMATION SYSTEMS

#### ISYS 198U ST: Software Tools: Presentation Technologies

Comprehensive coverage of basic to advanced features of Microsoft PowerPoint for effective oral and online presentations. Use advanced presentation technologies such as SmartBoard, NetOps, interactive monitors and DyKnow software for collaborative learning in education and business environments. Examine the transmission of PowerPoint presentations over the Internet using webcasting. Computer assignments required.

**Dates:** TWR, June 14-23

**Time:** 6:15 p.m.-9:35 p.m.

**Faculty:** Bonnie G. Matthews, B.S., Adjunct Assistant Professor; Instructional Technology Coordinator, Chesterfield County



**RICHMOND**  
School of Continuing Studies

## LITERATURE

### The Bible as Literature

Literary analysis of selected Biblical passages, with text viewed as autonomous entity. Attention to both intention of author(s) and message understood by recipient(s). Emphasis on student's direct involvement in textual analysis.

**Dates:** MTWRF, June 13-July 8

**Time:** 10:15 a.m.-12:15 p.m.

**Faculty:** Frank E. Eakin, Ph.D., Professor of Religion, University of Richmond

### Science Fiction

From Shelley's *Frankenstein* to H.G. Wells' *War of the Worlds* to Frank Herbert's *Dune* series; from Isaac Asimov to Robert Heinlein to Ursula LeQuin, the literature of science fiction plays a remarkable role in our understanding of the modern world and the future that may - or may not - occur.

**Dates:** TWR, June 14-July 8

**Time:** 6:15 p.m.-9:35 p.m.

**Faculty:** Cathy Herweyer, M.L.A., Adjunct Instructor, University of Richmond, School of Continuing Studies; Construction Aggregates Coordinator, Luck Stone

**Interested in joining Osher?** See page 14 for details on becoming an Osher member.

### Women of the Bible

Students will read selections from Old and New Testaments along with contemporary scholarship while exploring how women of the Bible took an active role in the salvation history of their people in spite of a repressive social and political environment.

**Dates:** MTR, July 11-August 5

**Time:** 6:15 p.m.-9:35 p.m.

**Faculty:** Rosalind B. Reilly, Ph.D., Adjunct Professor; Adjunct Faculty, Department of English, University of Richmond

## HISTORY

### The History of Israel

Israel's historical development through collaborative study of Israel's ideas and institutions within context of Ancient Near East. (FSHT)

**Dates:** MTWRF, July 11-August 5

**Time:** 10:15 a.m.-12:15 p.m.

**Faculty:** Frank E. Eakin, Ph.D., Professor of Religion, University of Richmond

### Religion, Terror & America

Religious terror hit America with a terrible blow on 9/11. But while many Americans might only then have discovered it, the phenomenon of religious terrorism has been with us a long time. Today's Hamas suicide bombers, for example, are only a contemporary version of the medieval Assassins sect. Nor is religiously based terrorism restricted to Islam - in some parts of the world, Muslims have been the victims, not the perpetrators. For example, Prime Minister Rabin of Israel was murdered by a fellow Jew. So this Course will aim to explain what is going on out there, why people are killing each other and why they are doing so in the name of religion. Where does the USA fit into all this?

**Dates:** MTWRF, July 11-August 5

**Time:** 10:15 a.m.-12:50 p.m.

**Faculty:** Christopher Catherwood, M.A., M. Litt, Ph. D. (progress currently being made at Cambridge University), Visiting Scholar of the University of Cambridge Centre of International Relations, Tutor at the Cambridge University Department of Continuing Education

All credit courses for audit are on a space available basis. Silver Osher Members are limited to one audit course per semester for a fee of \$100. There is no fee to audit courses for Gold and Gold Plus One Osher Members. Gold and Gold Plus One Osher Members may audit unlimited courses as space is available.

### Virginia History

Social, cultural, and political history of Virginia from Colonial period to present.

**Dates:** MTWRF, June 13-July 8

**Time:** 8 a.m.-10 a.m.

**Faculty:** Elisabeth E. Wray, M.A., Adjunct Professor, Coordinator, Liberal Arts and Academic Coordinator, Weekend College, Adjunct Faculty, Department of History, University of Richmond; Freelance writer and editor

Come take part in this series of lectures on a variety of timely topics.

Bring your lunch and enjoy the provided cookies and soft drinks. All Brown Bag Lectures are free and open to the public. We will meet from noon to

1:30 p.m. every Tuesday from June 7 through July 26, except July 5.

## BROWN BAG LECTURES

**June 7**

### **The Heart and Head of Smart Financial Decision Making**

This session will explore the three broad categories of “Financial Life” goals that will help you to better understand your own financial decision making process. We will look at how your current thinking, frame of mind, and various life transitions impact your financial decision making.

**June 14**

### **Leaving Yourself Behind . . . How Your Financial Life Impacts Your Own Legacies**

This session explores the major legacies we will each leave, their relative importance, and how we can plan, build, and implement our own legacies. The role and importance of various estate planning and financial documents will be discussed, and we will briefly examine some tools and other resources available for legacy leveraging. This session concludes with examples of typical legacy impacting mistakes.

**June 21**

### **The Financial Planning Mistakes of the Rich and Famous (and the lessons to be learned)**

This session examines the catastrophic financial planning mistakes made by the “Rich and Famous”. Based on real world examples, we will explore how these mistakes impacted their different legacies. This session concludes with what we can learn and apply from these mistakes.

**Faculty for June 7, 14 and 21:** Greg Doepke, Consultant, The Actuarial Consulting Group providing independent Estate, Family Wealth Transfer, Retirement Planning; and Investment Management guidance; graduate of the United States Military Academy at West Point; Masters in Business Finance, Virginia Commonwealth University; Certified Financial Planner®; Chartered Retirement Plans Specialist®; and a member of The Financial Planning Association and the Virginia Gift Planning Council. Greg is also a contributing author and instructor for continuing education for CPAs in the areas of Family Wealth Transfer and Retirement Planning, and teaches for the Community and Professional Education program at the University of Richmond School of Continuing Studies.

**June 28**

### **Conflict and Reconciliation: The Past and Future of Palestine/Israeli Relations**

**Faculty:** Muhammad S. Sahli, Ph.D., Acting Director, A More Perfect Union, UR Chaplaincy Office; past president of The Islamic Center of Virginia, and scholar of Islam, Islamic Civilization and the West; B.Sc, American University of Beirut; Ph.D., University of South Carolina.





**July 5**  
**No Brown Bag Lecture on this date**

**July 12**

**From Private School to Boot Camp: The Education of a Service Dog**

Come meet a working service dog, and learn more about the training and work of these devoted companions.

**Faculty:** Beverly Bouse, Co-President and volunteer puppy raiser, Old Dominion Chapter of Canine Companions for Independence.

**July 19**

**Picking Up the Pieces: Disaster Recovery**

We will look at how people respond to disaster, and at strategies for managing recovery efforts.

**Faculty:** Walter G. Green, III, Associate Professor and Program Director, Emergency Services Management, Disaster Science; B.A., Duke University; M.P.A., University of West Florida; M.B.A.A., Embry Riddle Aeronautical University; Ph.D., Capella University

**July 26**

**Virginia Indian History: The Untold Story**

This lecture will focus on what Virginians don't learn in school about the indigenous people of the Commonwealth, and what happened when the English came to stay.

The Virginia Council on Indians is an advisory board to the Governor and the General Assembly of the Commonwealth of Virginia. The Council's duties include studies and research regarding the Indian Tribes in the Commonwealth, making recommendations to the Commonwealth on issues regarding Virginia Indians, and advocating for the education of the general public about past and present Virginia Indians.

**Faculty:** Deanna Beacham, Program Specialist, Virginia Council on Indians; B.S., Duke University; M.A., University of Colorado. Ms. Beacham serves as consultant and speaker on Virginia Indian history and contemporary concerns to universities, teachers, museums, federal and state agencies and other organizations. As an auxiliary member of the Nansemond tribe, she has worked as a tribal legislative liaison to both the state and federal governments. She is currently a member of the tribal advisory board to Virginia Tech University, a member of the advisory team for the Chesapeake Foundation's John Smith Gateway project, and an associate member of the Council on Virginia Archaeologists. Her photographs of Virginia Indians have been displayed at state museums and published in state publications. She is also a women's traditional dancer at tribal powwows.

**Interested in joining Osher?** See page 14 for details on becoming an Osher member.



## Becoming an Osher Member

Your Osher membership entitles you to enroll in as many of the courses listed in this schedule as you'd like as space is available. Other benefits include access to the Boatwright Library's collections and services, as well as borrowing privileges, discounts for campus events and performances, full access to University dining facilities, free campus parking privileges, free annual series of international films and more.

### By Mail

- Complete the 2005 Membership Application on page 15, selecting your membership option.
- Remove the form from the brochure, enclose your payment and mail to:

Osher Lifelong Learning Institute  
 University of Richmond  
 School of Continuing Studies  
 28 Westhampton Way  
 University of Richmond, VA 23173

### By Fax

- Complete the 2005 Membership Application on page 15, selecting your membership option.
- Remove the form from the brochure, include your credit card information for payment and fax to:

(804) 289-8138

### In Person

- Complete the 2005 Membership Application on page 15, selecting your membership option.
- Remove the form from the brochure and bring it with your payment to the School of Continuing Studies. We are located in the Special Programs Building near the River Road entrance.
- Office hours are:  
 Monday-Thursday: 8:30 a.m.-7:00 p.m.  
 Friday: 8:30 a.m.-5:00 p.m.
- Please call 289-8133 for directions.

### Online Registration

Gold and Gold Plus One members can register online. Log on to our website:

[www.richmond.edu/scs/osher](http://www.richmond.edu/scs/osher)

Click on Register for a Class.

## Registration Information

Interested in enrolling in a class or two? Or three? Or more? Osher **Gold** and **Gold Plus One** members may register for as many of the courses listed in this schedule as they'd like as space is available for no charge. **Silver** members pay \$100 for credit courses for audit and are limited to enrolling in one of these courses per semester. Silver members pay the listed course fee for all other courses and may enroll in as many as they would like. Registrations are accepted up to a week prior to the class start date. You may duplicate the Course Registration form on page 17 or download additional copies from our website:

[www.richmond.edu/scs/osher](http://www.richmond.edu/scs/osher)

and click on *Register for a Class*.

### By Mail

- Complete the 2005 Course Registration form on page 17.
- Remove the form from the brochure, enclose your payment and mail to:

Osher Lifelong Learning Institute  
 University of Richmond  
 School of Continuing Studies  
 28 Westhampton Way  
 University of Richmond, VA 23173

### By Fax

- Complete the 2005 Course Registration form on page 17.
- Remove the form from the brochure, include your credit card information for payment and fax to:

(804) 289-8138

### In Person

- Complete the 2005 Course Registration form on page 17.
- Remove the form from the brochure and bring it with your payment to the School of Continuing Studies. We are located in the Special Programs Building near the River Road entrance.
- Office hours are:

Monday-Thursday: 8:30 a.m.-7:00 p.m.  
 Friday: 8:30 a.m.-5:00 p.m.

- Please call 289-8133 for directions.

## Confirmation Letters

Confirmation letters will be mailed prior to each class start date. Class location, parking permit and a campus map will be included.



# 2005-06 Membership Application

## Member Information

Please use black ink. Print clearly.

Name \_\_\_\_\_ Today's Date \_\_\_\_\_

Social Security Number \_\_\_\_\_ Date of Birth / / \_\_\_\_\_

Home Address \_\_\_\_\_

City \_\_\_\_\_ State \_\_\_\_\_ Zip Code \_\_\_\_\_

Telephone (Day) \_\_\_\_\_ (Evening) \_\_\_\_\_

Email \_\_\_\_\_

Are you a UR Alumna/us?  Yes  No Year of Graduation \_\_\_\_\_ Degree \_\_\_\_\_

Ethnic Group (Optional)

1  American Indian      2  Asian/Pacific Islander      3  Black Non-Hispanic

4  Caucasian      5  Hispanic      6  Multiracial

## Emergency Contact Information

Primary local contact person \_\_\_\_\_ Phone \_\_\_\_\_

Address \_\_\_\_\_

City \_\_\_\_\_ State \_\_\_\_\_ Zip Code \_\_\_\_\_

## Membership Options

Please select your annual membership level.

### GOLD \$400

This individual membership includes a University of Richmond One Card and e-mail address, parking pass, six complimentary tickets to the Modlin Center (two additional for UR Alumni), full use of the library including access to online data bases, option for membership in "Friends of the Boatwright", full use of the Wellness Center AND unlimited access to all Osher courses including mini-courses and semester-long credit courses available for audit.

### GOLD PLUS ONE \$600

Same benefits as our Gold membership but covers two people joining together.

Name of member with whom you are joining:  
\_\_\_\_\_

Please note: Both Gold Plus One members must complete Membership Applications.

An additional application is located on the next page.

### SILVER \$50

This individual membership includes a University of Richmond One Card and e-mail address, parking pass, full student-status use of the library including access to online data bases and full use of the Wellness Center.

Silver members pay \$100 to audit available semester-long credit courses.

Silver members pay for each Osher course in which they enroll. Course fees are listed in the Schedule of Classes.

## Payment Information

Your payment MUST accompany this form.

- Check.** Please enclose check made payable to University of Richmond.
- Credit Card.** We accept VISA, MasterCard or American Express. Please complete the following:

Please charge my:  VISA  MasterCard  American Express

Account Number \_\_\_\_\_ Expiration Date \_\_\_\_\_

Card Verification Number \_\_\_\_\_ Cardholder's Name \_\_\_\_\_

The card verification number is required to process your payment. This number follows the card number written on the signature strip on the back of the card. On American Express cards, the number is on the front of the card.

Signature \_\_\_\_\_ Amount to be Charged \$ \_\_\_\_\_



**RICHMOND**  
School of Continuing Studies

[www.richmond.edu/scs/osher](http://www.richmond.edu/scs/osher) 804.289.8133

OSHER LIFELONG LEARNING INSTITUTE ■ SUMMER 2005 SCHEDULE OF CLASSES



# 2005-06 Membership Application

## Member Information

Please use black ink. Print clearly.

Name \_\_\_\_\_ Today's Date \_\_\_\_\_  
 Social Security Number \_\_\_\_\_ Date of Birth / / \_\_\_\_\_  
 Home Address \_\_\_\_\_  
 City \_\_\_\_\_ State \_\_\_\_\_ Zip Code \_\_\_\_\_  
 Telephone (Day) \_\_\_\_\_ (Evening) \_\_\_\_\_  
 Email \_\_\_\_\_

Are you a UR Alumna/us?  Yes  No Year of Graduation \_\_\_\_\_ Degree \_\_\_\_\_

### Ethnic Group (Optional)

- 1  American Indian      2  Asian/Pacific Islander      3  Black Non-Hispanic  
 4  Caucasian      5  Hispanic      6  Multiracial

## Emergency Contact Information

Primary local contact person \_\_\_\_\_ Phone \_\_\_\_\_  
 Address \_\_\_\_\_  
 City \_\_\_\_\_ State \_\_\_\_\_ Zip Code \_\_\_\_\_

## Membership Options

Please select your annual membership level.

### GOLD \$400

This individual membership includes a University of Richmond One Card and e-mail address, parking pass, six complimentary tickets to the Modlin Center (two additional for UR Alumni), full use of the library including access to online data bases, option for membership in "Friends of the Boatwright", full use of the Wellness Center AND unlimited access to all Osher courses including mini-courses and semester-long credit courses available for audit.

### GOLD PLUS ONE \$600

Same benefits as our Gold membership but covers two people joining together.

Name of member with whom you are joining: \_\_\_\_\_

Please note: Both Gold Plus One members must complete Membership Applications.

An additional application is located on the next page.

### SILVER \$50

This individual membership includes a University of Richmond One Card and e-mail address, parking pass, full student-status use of the library including access to online data bases and full use of the Wellness Center.

Silver members pay \$100 to audit available semester-long credit courses.

Silver members pay for each Osher course in which they enroll. Course fees are listed in the Schedule of Classes.

## Payment Information

Your payment MUST accompany this form.

- Check.** Please enclose check made payable to University of Richmond.  
 **Credit Card.** We accept VISA, MasterCard or American Express. Please complete the following:

Please charge my:  VISA  MasterCard  American Express

Account Number \_\_\_\_\_ Expiration Date \_\_\_\_\_  
 Card Verification Number \_\_\_\_\_ Cardholder's Name \_\_\_\_\_

The card verification number is required to process your payment. This number follows the card number written on the signature strip on the back of the card. On American Express cards, the number is on the front of the card.

Signature \_\_\_\_\_ Amount to be Charged \$ \_\_\_\_\_





# 2005-06 Course Registration

## Member Information

Please use black ink. Print clearly. Each member must use a separate form.

Name \_\_\_\_\_ Today's Date \_\_\_\_\_

Social Security Number \_\_\_\_\_ Date of Birth / / \_\_\_\_\_

Home Address \_\_\_\_\_

City \_\_\_\_\_ State \_\_\_\_\_ Zip Code \_\_\_\_\_

Telephone (Day) \_\_\_\_\_ (Evening) \_\_\_\_\_

Email \_\_\_\_\_

## Course Information

Course Name	Start Date	CRN # (Office Use Only)	Cost (Silver Members Only)
SAMPLE: Domestic Relations	1/12/05		

**Gold and Gold Plus One Members:** There is no cost to register for any course in this catalog.  
**Silver Members:** Cost to register for a credit course for audit is \$100. Costs for other courses are listed in this schedule.

## Payment Information

FOR SILVER MEMBERS ONLY. Your payment MUST accompany this form.

- Check.** Please enclose check made payable to University of Richmond.
- Credit Card.** We accept VISA, MasterCard or American Express. Please complete the following:  
Please charge my:  VISA  MasterCard  American Express

Account Number \_\_\_\_\_ Expiration Date \_\_\_\_\_

Card Verification Number \_\_\_\_\_ Cardholder's Name \_\_\_\_\_

The card verification number is required to process your payment. This number follows the card number written on the signature strip on the back of the card. On American Express cards, the number is on the front of the card.

Signature \_\_\_\_\_ Amount to be Charged \$ \_\_\_\_\_



Tear Here



# 2005-06 Course Registration

## Member Information

Please use black ink. Print clearly. Each member must use a separate form.

Name \_\_\_\_\_ Today's Date \_\_\_\_\_

Social Security Number \_\_\_\_\_ Date of Birth / / \_\_\_\_\_

Home Address \_\_\_\_\_

City \_\_\_\_\_ State \_\_\_\_\_ Zip Code \_\_\_\_\_

Telephone (Day) \_\_\_\_\_ (Evening) \_\_\_\_\_

Email \_\_\_\_\_

## Course Information

Course Name	Start Date	CRN # <small>(Office Use Only)</small>	Cost <small>(Silver Members Only)</small>
SAMPLE: Domestic Relations	1/12/05		

**Gold and Gold Plus One Members:** There is no cost to register for any course in this catalog.  
**Silver Members:** Cost to register for a credit course for audit is \$100. Costs for other courses are listed in this schedule.

## Payment Information

FOR SILVER MEMBERS ONLY. Your payment MUST accompany this form.

**Check.** Please enclose check made payable to University of Richmond.

**Credit Card.** We accept VISA, MasterCard or American Express. Please complete the following:

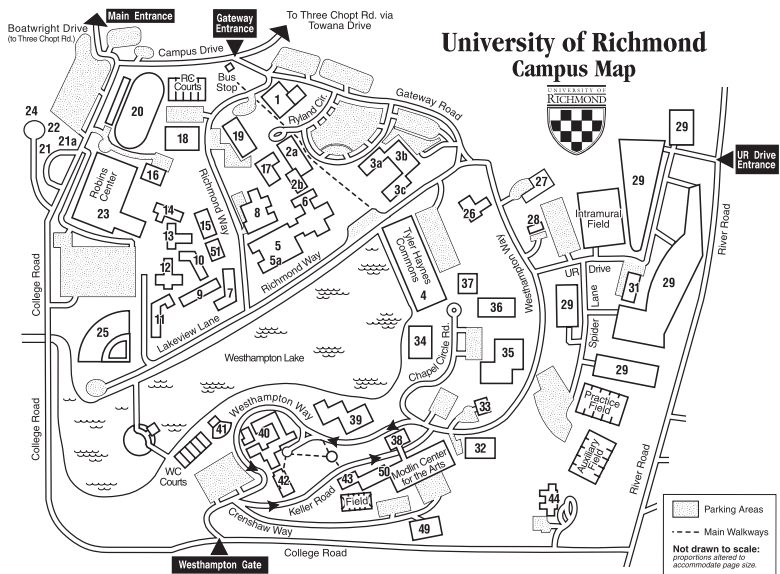
Please charge my:  VISA     MasterCard     American Express

Account Number \_\_\_\_\_ Expiration Date \_\_\_\_\_

Card Verification Number \_\_\_\_\_ Cardholder's Name \_\_\_\_\_

The card verification number is required to process your payment. This number follows the card number written on the signature strip on the back of the card. On American Express cards, the number is on the front of the card.

Signature \_\_\_\_\_ Amount to be Charged \$ \_\_\_\_\_



- Admissions 18
- Advancement Office 3a
- Alice Haynes Room 4
- Alumni Office 49
- Arts & Sciences Dean 5
- Boatwright Memorial Library 5
- Booker Hall of Music 38
- Bookstore 4
- Brunet Memorial Hall 18
- Bursar's Office (Student Accounts) 18
- Business Office 3a
- Business School 1
- Camp Concert Hall 38
- Campus Ministries Center 37
- Cannon Memorial Chapel 36
- Career Development Center 3b
- Center for Civic Engagement 4
- Chancellor's Office 5
- Chaplain's Office 37
- Counseling and Psychological Services (CAPS) 3b
- Data Systems Administration 16
- Deanery 33
- Dennis Memorial Hall 13
- E. Carlton Wilton Center for Interfaith Campus Ministries 37
- Financial Aid 18
- Fraternalities 22 & 24
- Freeman Hall 10
- Gottwald Science Center 35
- Graduate School Dean 5
- Gray Court 39
- Gumenick Academic/Administrative Quadrangle 3
- Hellman Dining Center 34

- Human Resource Services 8
- Information Services 17
- International Education 3c
- International House (Atlantic House) 21a
- Jenkins Greek Theatre 41
- Jepson Alumni Center 49
- Jepson Hall 17
- Jepson School of Leadership Studies 17
- Jepson Theatre 50
- Jeter Memorial Hall 15
- Keller Hall 43
- Law Residence Hall 21
- Law School 19
- Law School Alumni Office 19
- Lora Robins Court 32
- Lora Robins Gallery of Design from Nature 5
- Management Institute 1
- Marsh Art Gallery 50
- Marsh Hall 11
- Maryland Hall 3a
- Media Resource Center 5
- Military Science 16
- Millhiser Gymnasium 16
- Modlin Center for the Arts 50
- Moore Memorial Hall 12
- North Court 40
- North Court Reception Room 40
- Perkinson Recital Hall 40
- Phonathon Center 28
- Pitt Baseball Field 25
- Police 31
- Political Science 8
- Post Office 5a
- Power Plant 26
- President's Home 44

- President's Dining Room 4
- President's Office 3a
- Printing Services 28
- Puryear Hall 3c
- Registrar 18
- Richmond College Dean 51
- Richmond Hall 3b
- Richmond Research Institute 8
- Robins Center 23
- Robins Center Pool 23
- Robins Pavilion 49
- Robins Memorial Hall 14
- Robins School of Business 1
- Ryland Halls
  - Robert Ryland Hall 2a
  - Charles H. Ryland Hall 2b
- School of Continuing Studies 31
- Services Building 28
- Soccer/Track Complex 20
- South Court 42
- Special Programs Building 31
- Student Affairs 4
- Student Health Center 31
- Thalheimer Guest Cottage 33
- Thomas Memorial Hall 7
- Tyler Haynes Commons 4
- University Facilities 27
- University Forest Apartments 29
- University Services 27
- Virginia Baptist Historical Society 6
- Weinstein Hall 8
- Westhampton College Dean 33
- Whitehurst 51
- Wilton Center 37
- Wood Memorial Hall 9

## Directions to Campus

The Osher Lifelong Learning Institute is located in the School of Continuing Studies on the campus of the University of Richmond.

For detailed directions, log on to:

[www.richmond.edu/about/directions/directions.htm](http://www.richmond.edu/about/directions/directions.htm)

or call 289-8133.



We're educating Richmond.

Your co-workers. Your neighbors. Your friends. Your family.  
Richmonders decide to continue their education every day.  
Now it's your turn. Let the University of Richmond be your choice.

Learn computer basics. Engage in thought-provoking discussions over lunch.  
Relive history. Experience the arts. Rediscover your love of learning. The Osher  
Lifelong Learning Institute offers a variety of courses to help Richmonders over  
50 pursue their special interests, learn new skills and engage in social issues.

The School of Continuing Studies has been helping Richmonders reach their  
learning goals for more than forty years. And we'd like to help you, too.



University of Richmond, VA 23173

NON-PROFIT ORGANIZATION  
US POSTAGE PAID  
PERMIT NO. 6  
UNIVERSITY OF RICHMOND  
VIRGINIA 23173